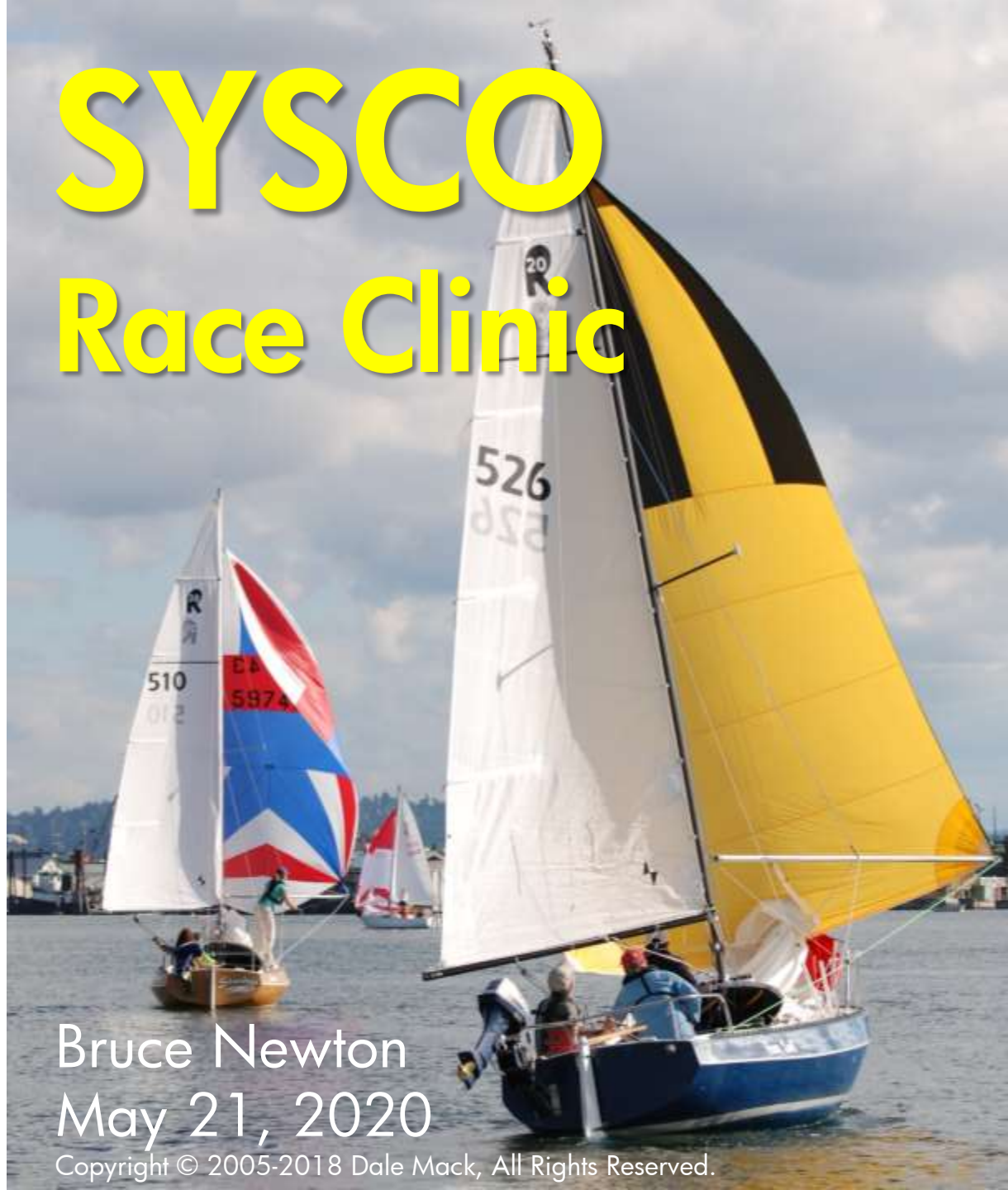


SYSCO Race Clinic



Bruce Newton
May 21, 2020

Copyright © 2005-2018 Dale Mack, All Rights Reserved.

Agenda



- OCSA Racebook
- How to Enter a Race
- OCSA General Sailing Instructions
- Courses
- How to Start a Race
- How to Finish a Race
- Areas that are Obstructions
- Safety Regulations

OCSA Racebook

Your Guide to Local Racing



- List of Clubs and Fleets
- Sailing Events Calendar
- General Sailing Instructions (a.k.a. the local rules)
- Course Charts
- Race Notices and Clinics

Sailpdx.org – Your Racebook Source

 Search

Home

Racing

Events Calendar

Resources

About OCSA

Photo Gallery

Contact Us

Join/Renew OCSA Membership

Event Notice Board & Registration

OCSA Racebook, Charts, SERs & Race Documents

Racing Schedule

Race Results

Race Protests

Racing Fleets

Forms & Information

Racing Events-Other Areas



Photo by: Dena Kent

The Portland Area Sailing and Racing Scene

Become a Member
Join/Renew Your OCSA Membership

Documents in PDF Format



OCSA Racebook, Course Charts, SERs & Race Documents

[Click here](#) to become an OCSA member¹ – join OCSA or renew your membership for only \$30 annually, and you'll receive the 2020 OCSA Racebook as part of your membership. Go "print-free", with the electronic-only versions (download below), and receive a \$10 discount on your membership!

Click to view and/or download document²

- [2020 OCSA Racebook](#)^{3,6} (revised 1/14/20)
- [OCSA Course Charts](#)^{4,6}
 - OCSA Designated Mark Chart (2020)
 - OCSA Windward Leeward Alphabetic Courses (2020)
- [OCSA General Sailing Instructions](#)^{5,6} (2020)
- [OCSA Safety Equipment Requirements \(SERs\)](#)⁶ (02/25/16)
- [OCSA Race Eligibility](#) (04/01/20)
- [Guide for New Racers](#)
- [Racing Rules of Sailing](#)
- [Race Management Tools](#)

Download PDF
copies and carry
them in your phone

Become a Member
Join/Renew Your OCSA Membership



How to Enter a Race



How to Enter a Race

Notice of Race



SYSCO Spring Evening Series April 24 - May 31



NOTICE OF RACE

INVITATION: The Small Yacht Sailing Club of Oregon extends an invitation to all sailboat skippers to compete in this series on the Columbia River between the I-5 and I-205 bridges.

DESCRIPTION: This is a five-evening series consisting of one or more races each night.

ELIGIBILITY AND INSTRUCTIONS: Races shall be governed by the Racing Rules of Sailing, OCSA General Sailing Instructions, and supplemental sailing instructions posted on the OCSA Event Notice Board. The series is open to all boats sailing in a one-design, level, cruising, or PHRF classes; all entrants shall comply with the rules governing their class or fleet. A minimum of three boats is required to constitute a level fleet or one-design class. PHRF entrants must hold a current PHRF certificate. All entrants must be current OCSA members.

DATES AND TIMES: First warning signal is 1830 hours for all races. Additional races for individual classes may begin after all boats in that class have finished. The starting sequence for finished fleets may begin in any order.

Tuesdays: April 24, May 1, 15, 22, 29: PHRF, Level Fleets, and J/105, Martin 24, Melges 24, Merit 25, and Moore 24 one-design fleets.

Thursdays: April 26, May 3, 17, 24, 31: Cruising Fleet classes, and J24, Ranger 20, Cal 20, Catalina 22, and Venture 21 one-design fleets.

REGISTRATION: Entry and payment must be completed online at www.sailpdx.org. Indicate class preference (Level, Cruising, PHRF, or one-design fleet) on the entry form. The registration deadline is 48 hours prior to the first scheduled race. Late registration may be accepted up to 1830 hours on the day before the first scheduled race with a \$30 late fee in addition to any required entry fees. Otherwise, no late entries will be accepted.

FEES: Free for SYSCO members. \$50 for non-members and associate members.

COURSES: The OCSA General Sailing Instructions and Courses will be available in the OCSA Racebook.

TROPHIES: Awards will be presented at the annual Awards Banquet. This Series qualifies for the OCSA Participation and Performance Trophy.

INFORMATION: Race information and results will be posted at www.sailpdx.org. For more information contact the Race Captain sysco-racecaptain@sailocsa.org.

END OF NOTICE OF RACE

Your Fleet determines when you race

Online registration required

Registration closes 48 hours prior to the first race

Late registration will cost you an additional \$30

Pick Your Fleet or Division

PHRF, One-Design, Level, or Cruising



- PHRF
 - Certificate, rating, handicap applied
- One-Design
 - At least 3 of the same boats
- Cruising
 - No spinnakers, level scoring
- Level
 - Spinnaker allowed, level scoring

Not sure?

Talk to
the Race
Captain
for a Fleet
assignment

Online Registration

www.sailpdx.org



SAIL PDX
OREGON CORINTHIAN SAILING ASSOCIATION

 Search

- Home
- Racing**
- Events Calendar
- Resources
- About OCSA
- Photo Gallery
- Contact Us

- Join/Renew OCSA Membership
- Event Notice Board & Registration**
- OCSA Racebook, Charts, SERs & Race Documents
- Racing Schedule
- Race Results
- Race Protests
- Racing Fleets
- Forms & Information
- Racing Events-Other Areas



Photo by: Dena Kent

The Portland Area Sailing and Racing Scene

Become a Member
Join/Renew Your OCSA Membership

One Stop Shop

Notice of Race, Registration, & Notice Board



SAIL PDX						
OREGON CORINTHIAN SAILING ASSOCIATION						
Home	Racing	Events Calendar	Resources	About OCSA	Photo Gallery	Contact Us
Race	Date					
OCSA Rules Seminar	TBD: Postponed	Details	Register	-	-	
PYC Opening Day	4/4-4/5: Canceled	Details	-	View Registrants	Notice Board	
SYSCO COB Challenge	TBD: Postponed	Details	Register	View Registrants	Notice Board	
SYSCO Spring Evening Series - Tues	4/21, 4/28, 5/5, 5/12, 5/19, 5/26: Series Canceled	Details	Register	View Registrants	Notice Board	
SYSCO Spring Evening Series - Thurs	4/23, 4/30, 5/7, 5/14, 5/21, 5/28: Series Canceled	Details	Register	View Registrants	Notice Board	

About memberships

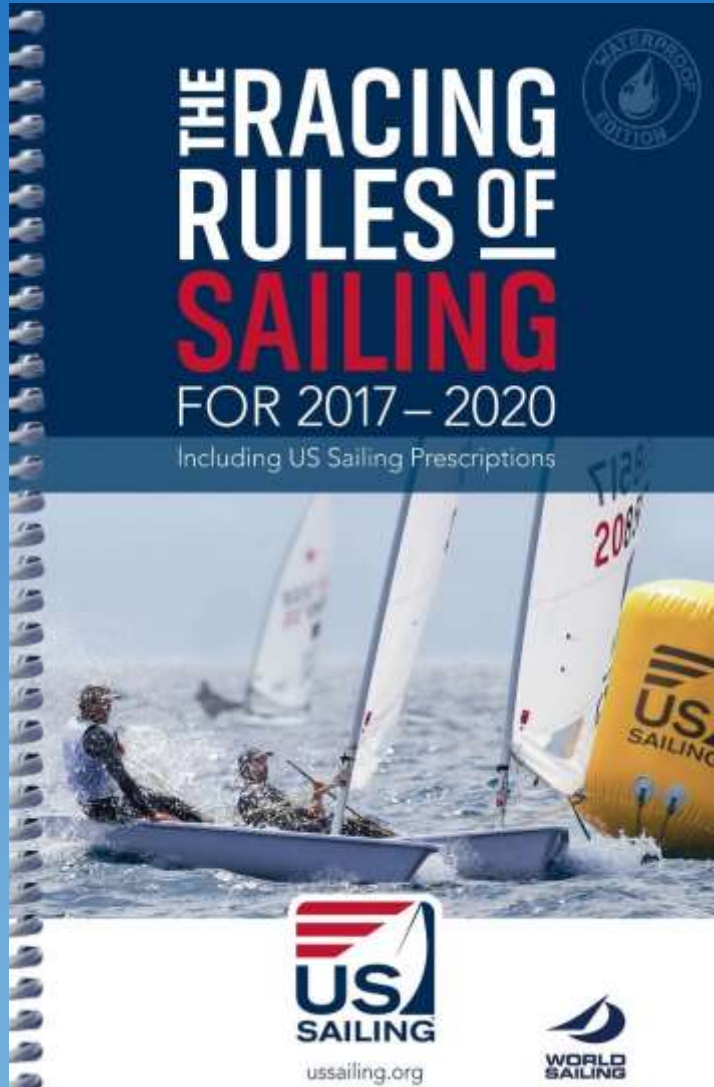


- To participate in any racing event you must join OCSA (\$20, results doghouse)
- Events are organized by Clubs (e.g., SYSCO Summer Evening Series)
- You do not have to be a member of the sponsoring Club to enter an event (but you will pay an event fee)
- Registration is free for Club members



The Rules

Rules



- ISAF Racing Rules of Sailing
- OCSA General Sailing Instructions
- Notice of Race
- Supplemental Sailing Instructions
- Rules of any one-design, level, or PHRF fleet participating in the event
- Safety Equipment Requirements

Knowing the rules



- SailPDX – Racing – Forms and Information – Racing Rules of Sailing and look for IASF link
- print PDF pages
 - 11-14 Definitions
 - 18-23 Part 2

[https://www.sailing.org/tools/documents/WorldSailingRRS20172020-\[20946\].pdf](https://www.sailing.org/tools/documents/WorldSailingRRS20172020-[20946].pdf)

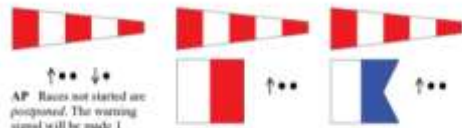
Have on your boat



RACE SIGNALS

The meanings of visual and sound signals are stated below. An arrow pointing up or down (↑ ↓) means that a visual signal is displayed or removed. A dot (•) means a sound, five short dashes (-----) mean repetitive sounds; a long dash (—) means a long sound. When a visual signal is displayed over a class flag, the signal applies only to that class.

Postponement Signals



AP Races not started are postponed. The warning signal will be made 1 minute after removal, unless at that time the race is postponed again or abandoned.

AP over H Races not started are postponed. Further signals apply.

AP over A Races not started are postponed. No more racing today.

AP over a numeral point 1-9



Proportionate of 1-9 hours from the scheduled starting time.

Abandonment Signals



N All races that have started are abandoned. Returns to the starting area. The warning signal will be made 1 minute after removal unless at that time the race is abandoned again or postponed.

N over H All races are abandoned. Further signals apply.

N over A All races are abandoned. No more racing today.

Preparatory Signals



↑• ↓• —• —• —• —• —•
P Preparatory signal. Rule 30.1 is in effect.
Z Rule 30.2 is in effect.
I Rule 30.2 is in effect.
Black flag. Rule 30.4 is in effect.

Recall Signals



↑•
N Individual recall.

Shortened Course



↑••
S The course has been shortened. Rule 32.2 is in effect.

Changing the Next Leg



C The position of the next mark has been changed.
 to starboard, to port, to decrease the length of the leg, to increase the length of the leg.

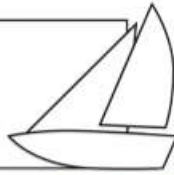
Other Signals



↑•
L Advertise: A notice to competitors has been posted. Afloat: Come within hail or follow this vessel.
M The object displaying this signal replaces a missing mark.
V Wear a personal flotation device (see rule 40).
Blue flag or shape. This race committee vessel is in position at the finishing line.

Print pages 2-3 from the RRS
 These are the Race Signals used to communicate

OCSA General Sailing Instructions



The notation '[DP]' in a rule SI means that the penalty for a breach of that rule may, at the discretion of the protest committee, be less than disqualification.

1. RULES:

- 1.1) The regattas will be governed by the rules as defined in The Racing Rules of Sailing.
 - 1.2) The prescriptions of US Sailing for RRS 63.2 and 63.4 will not apply.
 - 1.3) Rules V1 & V2 of Appendix V will apply.
 - 1.4) The US Sailing Safety Equipment Requirements for the Category Near-shore" will apply. [DP]
2. **NOTICES TO COMPETITORS:** Notices to competitors will be posted on the official notice board located at www.sailpdx.org.
3. **CHANGES TO SAILING INSTRUCTIONS:** Any change to the Sailing Instructions will be posted on the official notice board by 2200 local time on the day before it will take effect.
4. **SCHEDULE OF RACES:** The dates of racing, number of races, and scheduled time of the warning signal for the first race each day will be provided by the Organizing Authority and published in the Event Notice of Race.
5. **CLASS FLAGS:** Class Divisions and Class Flags, if any, will be provided by the Organizing Authority for the Event and will be posted on the official notice board by 2200 local time on the day before it will take effect.
6. **RACING AREAS:** Buoy races will be in the area between the I-5 and I-205 bridges. Distance races will have the racing area defined by the Organizing Authority in the Event Notice of Race.

7. THE COURSES:

- 7.1) Courses will be designated by letter or by course description listing marks individually. Mark descriptions and locations for individually listed Designated Marks are provided in the "OCSA Designated Mark Chart" and for letter-designated courses in the "OCSA Windward Leeward Alphabetic Courses".
- 7.2) A red square displayed at the top of the course board signals that, for all Windward Leeward Alphabetic Courses, OCSA Designated Mark "2" will serve as Mark 1.
- 7.3) For course descriptions listing OCSA Designated Marks, the first letter/number displayed is the starting mark, the last is the finishing mark, and those in between are the rounding marks.
- 7.4) Boats must pass each rounding mark in the order designated leaving each rounding mark to port.
- 7.5) For the Windward Leeward Alphabetical Courses, mark 4 will not be used unless mark 3 is set.

8. MARKS

- 8.1) Marks are as described in the "OCSA Windward Leeward Alphabetic Courses" or in the "OCSA Designated Mark Chart".
- 8.2) Starting & Finishing Marks
 - <DM> the Start and/or Finish is between the OCSA designated mark and

OCSA General Sailing Instructions



the Signal Vessel.

- "SF" the Start and Finish are the same. Start and finish between an inflatable mark and the Signal Vessel.
- "S" the Start is between a GREEN inflatable mark and the Signal Vessel.
- "F" the Finish is between an inflatable mark opposite of the start mark and the Signal Vessel.

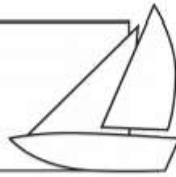
9. AREAS THAT ARE OBSTRUCTIONS:

- 9.1) Infractions of Sailing Instructions in this section are subject to the same protest provisions as an infraction under Part 2 of the RRS. A boat that may have committed an infraction may exonerate herself by taking a One-Turn penalty.
- 9.2) The area between McCuddy's Moorage and the 42nd Street boat ramp is restricted. A boat shall not sail inside the boundaries that are between the lighted day mark "2" at McCuddy's Moorage and the end of the breakwater at the 42nd Street boat ramp, and inside the county marker buoys which designate the restricted area. In the absence of county marker buoys boats shall not sail within 150 feet of the moorages or launch area. County marker buoys upriver or downriver of the restricted area do not designate an area restricted to racing. [DP]
- 9.3) All boats shall pass on the channel side of any piling, buoy marking a missing piling, and log rafts or barges secured to a piling. [DP]
- 9.4) After starting, a boat shall not cross the line between the signal vessel and the finishing mark unless she is: (a) finishing, or (b) rounding the mark end of the finishing line when such a rounding is required by the course for her class. A boat that fails to exonerate herself will be scored DSQ without a hearing. This changes RRS 63.1 and Appendix A5.

10. THE START

- 10.1) When a plus sign ("+") is displayed between two or more classes, those classes will start together at the same time. The starting order for subsequent races may be different than the starting order for the first race. Classes may be started in any order.
- 10.2) The starting line will be between a staff displaying an orange flag on the Signal Vessel and the course side of the starting mark.
- 10.3) The Race Committee will attempt to hail the sail number of the recalled boat. Failure to hail, the timing of the hail, or any other issues associated with the hail will not be grounds for a request for redress. This changes RRS 62.1(a).
- 10.4) In the event of a General Recall, the recalled class will be restarted at the end of the current sequence. The First Substitute will be removed with the Preparatory flag one minute before the start of the following class. This changes RRS 29.2.
- 10.5) The starting area extends 150 feet on both sides of the starting line and in a 150 foot radius from both ends of the starting line. Boats whose warning signal has not been made shall avoid the starting area during the

OCSA General Sailing Instructions



starting sequence for other races. [DP]

- 10.6) A boat that has not started, whether or not racing, may use propulsion without penalty as long as the boat does not start for at least 4 minutes after discontinuing propulsion. This modifies RRS 42.
- 10.7) A boat that makes contact with a Race Committee vessel will be scored DSQ without a hearing. This changes RRS 63.1 and Appendix A5.
- 10.8) If the Race Committee intends to start another race on the same day, it may display the second substitute (with no sound) while boats are finishing.
- 11. THE FINISH**
- 11.1) The finishing line will be between a staff displaying an orange flag on the Signal Vessel and the course side of the finishing mark.
- 11.2) A boat that is delaying the start of the next race may be awarded her place by the Race Committee without finishing. This changes RRS 28.
- 12. TIME LIMITS**
- 12.1) Except for distance races, the first boat in each class must finish within 2 hours of her starting signal. All other boats must finish within 30 minutes of the first boat in her class or they will be scored Time Limit Expired (TLE). This changes RRS 35, and Appendix A4, A5 and A11.
- 12.2) For distance races, the time limit will be provided by the Organizing Authority and published in the Event Notice of Race.
- 13. PROTESTS AND REQUESTS FOR REDRESS**
- 13.1) A boat intending to file a protest shall notify the Race Committee by hail or on VHF channel 72 immediately after finishing and before leaving the racing area unless she is unable to do so.
- 13.2) Protests must be submitted online at www.sailpdx.org/racing/race-protests/ or emailed to the Protest Committee at protest@sailocsa.org no later than 2359 local time on the day of the race.
- 13.3) Notices of protests by the Race Committee or Protest Committee will be posted on the Official Notice Board to inform boats under RRS 61.1(b).
- 13.4) The schedule of hearings will be posted on the Official Notice Board after the protest time limit, together with a document file for each protest or request for redress filed. These postings shall constitute notice given and the protest or redress information as required by RRS 63.2 and will constitute the notice requirement under RRS 61.1(b). Hearings will proceed whether or not all boats are represented.
- 13.5) Protesting parties may be offered the opportunity to participate in voluntary protest mediation; Appendix T of the RRS.
- 14. SCORING**
- 14.1) Races for PHRF Classes will be scored using PHRF Time-on-Time ratings. Level and One-Design Classes shall be scored by the order of finish.
- 14.2) One race will constitute a series.
- 14.3) A score of TLE will be the number of finishers plus one. This changes RRS Appendix A4 & A5.
- 14.4) When fewer than 5 races have been completed, a boat's series score will

OCSA General Sailing Instructions



be the total of her race scores.

- 14.5) When 5 or more races are completed, a boat's series score will be the total of her race scores excluding one of her worst scores for every 5 races that are completed.
- 15. SAFETY REGULATIONS**
- 15.1) Boats shall not impede the passage of a stand-on vessel and shall comply with the [U.S. Inland Navigation Rules Act of 1980](#). Boats that fail to comply promptly with signals from a race official to alter course, or that receive a 5-blast warning (5 short sounds) from a stand-on vessel, will be subject to protest and possible disqualification. A boat in a position where she may interfere with a stand-on vessel shall clear the danger area immediately, and may use propulsion if necessary to do so, provided she does not improve her competitive position. This changes RRS 42. [DP]
- 15.2) A boat that leaves the racing area before finishing or before the last race of the day shall, if possible, notify the Race Committee in person or via VHF channel 72 and receive a response from the Race Committee. [DP]
- 16. RADIO COMMUNICATION**
- 16.1) Except in an emergency, a boat that is racing shall not make voice or data transmissions and shall not receive voice or data communication that is not available to all boats. [DP]
- 16.2) The Race Committee may report visual signals and other information via VHF channel 72. This information is provided as a courtesy and does not in any way alter a boat's responsibility to observe the visual race signals that govern the conduct of the race. Errors or omissions resulting from such courtesy broadcasts will not be grounds for redress. This changes RRS 62.1(a).
- 17. DISCLAIMER OF LIABILITY:** Competitors participate in races at their own risk. See RRS 4, Decision to Race. OCSA and the Organizing Authority will not accept any liability for material damage or personal injury or death sustained in conjunction with or prior to, during, or after an OCSA sanctioned event.
- 18. INSURANCE:** All boats shall have liability insurance currently in effect, covering yacht racing activities, property damage, personal injury and death in an amount appropriate for the type of boat being sailed. Minimum coverage of \$500,000 per occurrence is required.
- END OF SAILING INSTRUCTIONS**
- AWARDS:** The number of boats starting at least one race will determine the number of awards per fleet. Awards will be presented as follows: 3 boats - 1 award; 5 boats - 2 awards; 8 boats - 3 awards; 11 boats - 4 awards. Classes with fewer than 3 boats starting will not receive awards.
- Copyright © 2020 Oregon Corinthian Sailing Association. All rights reserved.

Changes to Sailing Instructions



Any changes to the
OCSA General Sailing Instructions
or
Event Sailing Instructions

shall be in writing and available via the
official notice board by 10 pm local time
on the day before it will take effect

Online Registration

www.sailpdx.org



SAIL PDX
OREGON CORINTHIAN SAILING ASSOCIATION

 Search

Home

Racing

Events Calendar

Resources

About OCSA

Photo Gallery

Contact Us

Join/Renew OCSA Membership

Event Notice Board & Registration

OCSA Racebook, Charts, SERs & Race Documents

Racing Schedule

Race Results

Race Protests

Racing Fleets

Forms & Information

Racing Events-Other Areas



The Portland Area Sailing and Racing Scene

Become a Member
Join/Renew Your OCSA Membership

One Stop Shop

Notice of Race, Registration, & Notice Board

 Search[Home](#)[Racing](#)[Events Calendar](#)[Resources](#)[About OCSA](#)[Photo Gallery](#)[Contact Us](#)

Race	Date				
ISC Monday Night Racing Series	3/11-9/30	Details	Register	-	-
SYSKO Race Clinic	4/11	Details	Register	-	-
SYSKO COB Challenge	4/20	Details	Register	View Registrants	Notice Board
SYSKO Spring Evening Series - Tues	4/23, 4/30, 5/14, 5/21, 5/28	Details	Register	View Registrants	Notice Board
SYSKO Spring Evening Series - Thurs	4/25, 5/2, 5/16, 5/23, 5/30	Details	Register	View Registrants	Notice Board

The Venue



The Race Area



Aids to Navigation as Race Marks



"2" isn't marked
because it is a Junction
Buoy

The Marks

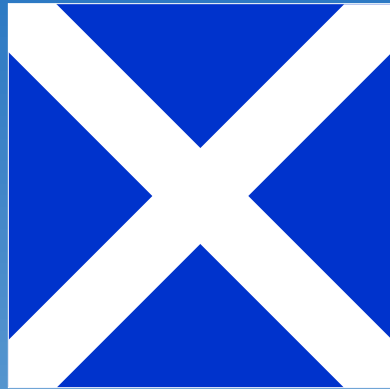


Race marks, including starting and finishing marks, may be any government buoy or daymark, or temporary inflatable mark set by the Race Committee

Mark Replacement



"M"
Mark
Replacement



- The object displaying this signal replaces a missing mark
- The mark set boat might be anchored displaying this signal if the regular mark had broken free and there wasn't time to reset it

Where to find the Race Committee



- Between "14" and "B" is common
- BUT, the Race Committee can setup anywhere

OCSA Designated Mark Chart



OCSA Designated Mark Chart



TEMPORARY MARKS

- | | |
|-----------------|-------------------|
| A - Airport | R - Ryan Point |
| B - Bar | T - Tomahawk |
| C - Columbia | U - Upper Airport |
| E - East River | X - Sextant |
| N - North River | |

NAVIGATIONAL BUOYS

- 2 - Red/Green Buoy
- 14 - Red Buoy "14"
- 18 - Red Buoy "18"

The chart describes the marks on the river and approximate location as designated by OCSA. The Race Committee may or may not use all of these marks. Courses will be displayed on the committee boat by listing a Course Description for each class. Each Course Description shall be constructed in accordance with the OCSA General Sailing Instructions in the Racebook.

Do not cross the finish line during the race unless you are: (a) finishing the race, or (b) rounding the mark end of the finishing line when such a rounding is required by the course for your class.

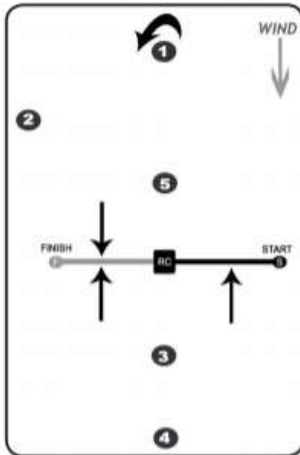
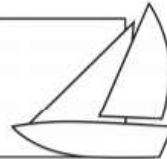
The information contained on this page is intended to clarify and not alter the OCSA General Sailing Instructions in the Racebook.

Revised 2020

OCSA Windward Leeward Courses



OCSA Windward Leeward Alphabetic Courses



- 1 - Windward Rounding Mark:**
A temporary yellow/orange inflatable mark or OCSA designated navigation buoy "2"
- 2 - Gybe Mark:**
A temporary yellow/orange inflatable mark
- 3 - Short Course Leeward Rounding Mark:**
A temporary yellow/orange inflatable mark
- 4 - Long Course Leeward Rounding Mark:**
A temporary yellow/orange inflatable mark
- 5 - Leeward Rounding Mark:**
Approximately 50 yards to weather of the Race Committee Boat - A temporary yellow/orange inflatable mark
- S - Starting Mark:**
A temporary green inflatable mark
- F - Finishing Mark:**
A temporary yellow/orange inflatable mark or OCSA designated Navigation Buoy "14"

The diagram shows the marks of the course.

The Race Committee may or may not use all of these marks. However, mark 4 will not be used unless mark 3 is also set. The order in which the marks are to be passed is determined by the courses listed on the Alphabetic Table of Courses. A red square when displayed at the top of the course board signals that OCSA Designated Mark "2" shall serve as Mark 1. These courses are to be sailed with all marks left to port. Courses will be displayed on the committee boat by listing the class followed by the letter(s) from the Alphabetic Table of Courses. The start and finish lines may be on either side of the committee boat. The finish line is restricted. Do not cross the finish line during the race unless you are finishing the race. This information is intended to clarify and is not intended to alter the OCSA GSI's.

Revised 2020

ALPHABETIC TABLE OF COURSES			
Leeward (Downwind) Finish Courses		Windward (Upwind) Finish Courses	
A	Start-1-Finish	Q	Start-1-2-5-1-3-Finish
AA	Start-1-2-Finish	QQ	Start-1-2-5-1-4-Finish
B	Start-1-5-1-Finish	S	Start-1-3-1-5-1-3-Finish
BB	Start-1-5-1-5-1-Finish	SS	Start-1-4-1-5-1-4-Finish
C	Start-1-2-5-1-Finish	T	Start-1-3-Finish
CC	Start-1-2-5-1-2-5-1-Finish	TT	Start-1-3-1-3-Finish
D	Start-1-3-1-Finish	V	Start-1-4-1-3-Finish
DD	Start-1-3-1-3-1-Finish	W	Start-1-4-Finish
F	Start-1-4-1-Finish	WW	Start-1-4-1-4-Finish
FF	Start-1-4-1-4-1-Finish	X	Start-1-5-1-3-Finish
H	Start-1-3-1-5-1-Finish	XX	Start-1-5-1-4-Finish
HH	Start-1-4-1-5-1-Finish	Z	Start-1-2-3-Finish
		ZZ	Start-1-2-3-1-3-Finish

Alphabetic codes

Two new courses
this year

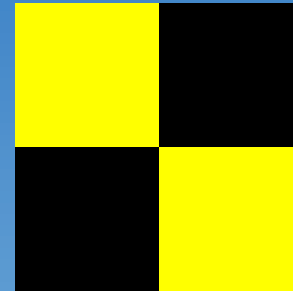
Check-In with the Race Committee



Come Within Hail



“L”
Come Within
Hail

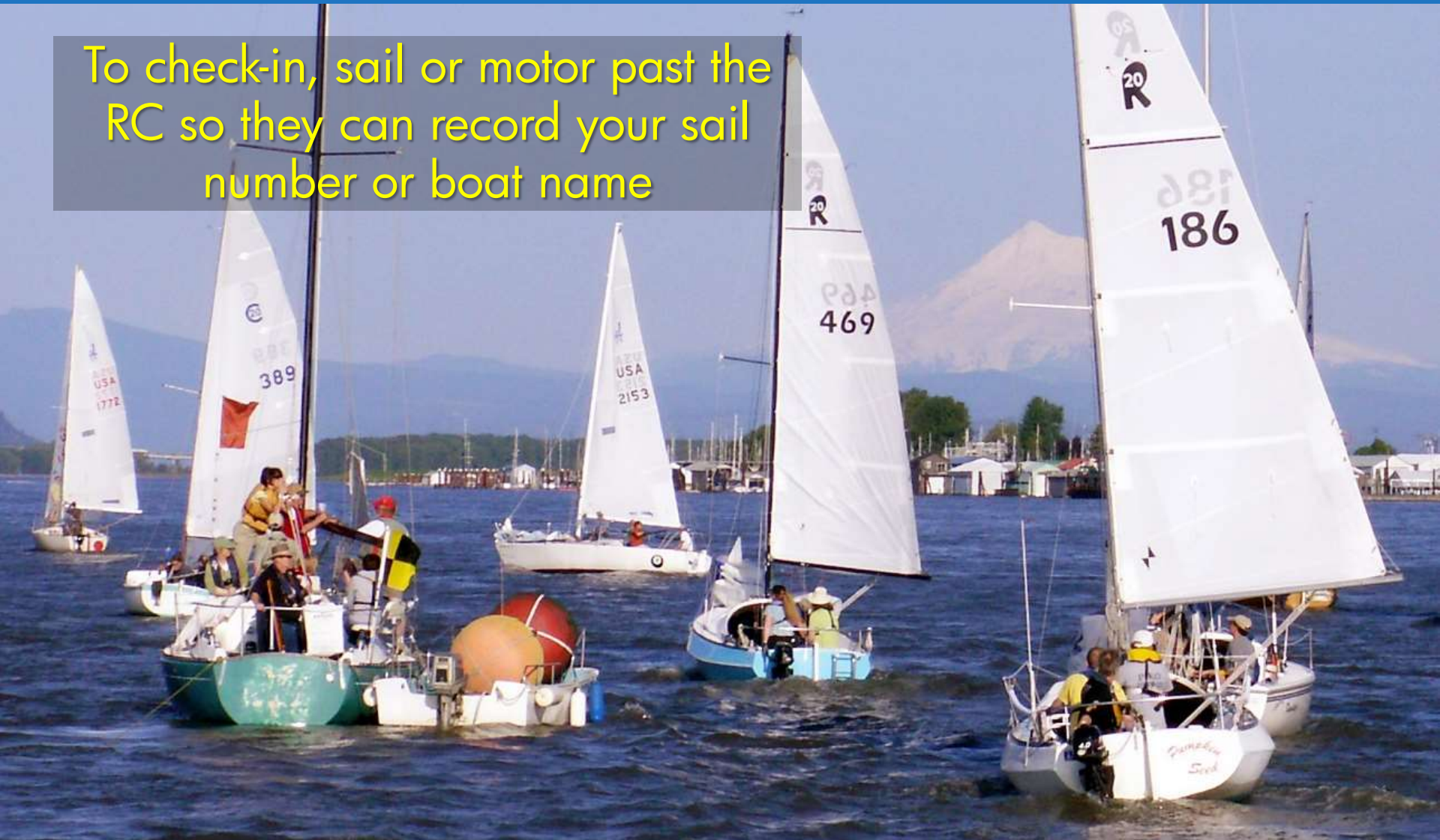


- The Race Committee (RC) is ready to check-in participants
- The course is posted

Check-In



To check-in, sail or motor past the RC so they can record your sail number or boat name



Retiring after Check-In



A boat that leaves the racing area before finishing or before the last race of the day should notify the Race Committee **in person** or via **VHF channel 72** and receive a response from the Race Committee

Race Committee Communications



Class Divisions and Class Flags



This process assigns the flag signal that will be used to communicate to you during the race

Class Divisions and Class Flags shall be provided by the Organizing Authority for the Event and will be available via the official notice board by 10 pm local time on the day before it will take effect

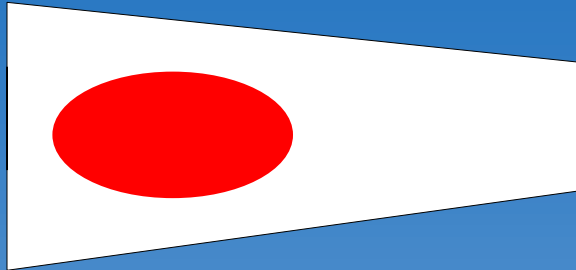
Sailpdx.org

Flags for Class Divisions

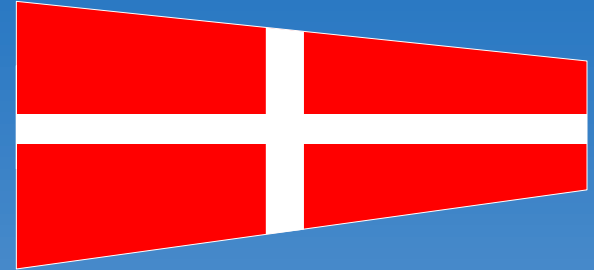
Class Divisions = Fleets grouped together



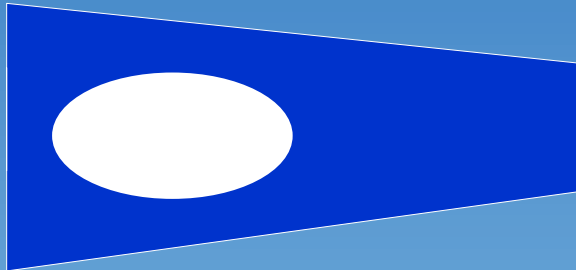
1



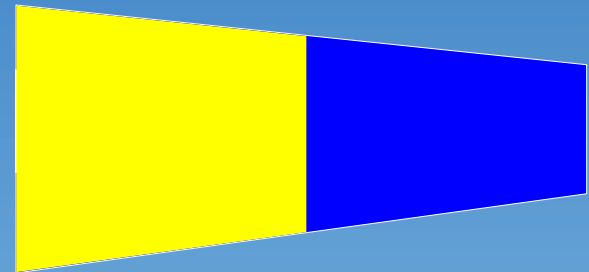
4



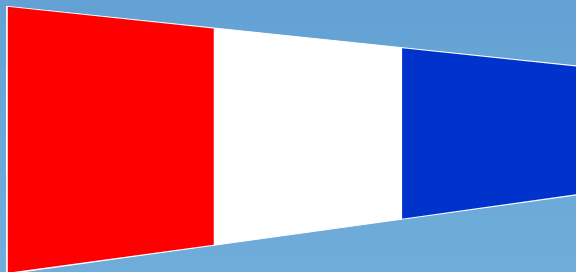
2



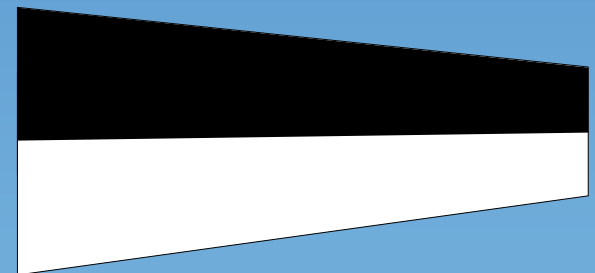
5



3



6



SYSCO uses Int'l Code Flags to represent Class Divisions

VHF Radio Communications



- The Race Committee may report visual signals and other information via **VHF channel 72**
- This information is provided as a courtesy and does not in any way alter the responsibility to observe the visual race signals that govern the conduct of the race
- Errors or omissions resulting from such courtesy broadcasts shall not be grounds for redress
This changes RRS 62.1(a)

Getting the Course



Have on your boat!



Kestrel

2020
OCSA Windward Leeward Alphabetic Courses

- 1 - WINDWARD ROUNDING MARK:
Temporary Yellow/Orange Inflatable Mark or OCSA designated Navigation Buoy "2"
- 2 - GYBE MARK:
Temporary Yellow/Orange Inflatable Mark
- 3 - SHORT COURSE LEEWARD ROUNDING MARK:
Temporary Yellow/Orange Inflatable Mark
- 4 - LONG COURSE LEEWARD ROUNDING MARK:
Temporary Yellow/Orange Inflatable Mark
- 5 - LEEWARD ROUNDING MARK:
Temp. Yellow/Orange Inflatable Mark
Approximately 50 yards to weather of the Race Committee Boat
- 6 - STARTING MARK:
Temporary Green Inflatable Mark
- F - FINISHING MARK:
Temporary Orange Inflatable Mark or OCSA designated Navigation Buoy "14"

The diagram shows the marks of the course. The Race Committee may or may not use all of these marks. However, mark 4 will not be used unless mark 3 is also set. The order in which the marks are to be passed is determined by the courses listed on the Alphabetic Table of Courses. A red square when displayed at the top of the course board signals that OCSA Designated Mark "2" shall serve as Mark 1. These courses are to be sailed with all marks left to port. Courses will be displayed on the committee boat by listing the class followed by the letter(s) from the Alphabetic Table of Courses. The start and finish followed by the letter(s) from the committee boat. The finish line is restricted. Do not cross the finish line during the race unless you are finishing the race. This information is intended to clarify and is not intended to alter the OCSA General Sailing Instructions.

ALPHABETIC TABLE OF COURSES			
Leeward (Downwind) Finish Courses	Windward (Upwind) Finish Courses		
A	Start-1-Finish	Q	Start-1-2-5-1-3-Finish
AA	Start-1-2-Finish	QQ	Start-1-2-5-1-4-Finish
B	Start-1-5-1-Finish	S	Start-1-3-1-5-1-3-Finish
BB	Start-1-5-1-5-1-Finish	SS	Start-1-4-1-5-1-4-Finish
C	Start-1-2-5-1-Finish	T	Start-1-3-Finish
CC	Start-1-2-5-1-2-5-1-Finish	TT	Start-1-3-1-3-Finish
D	Start-1-3-1-Finish	V	Start-1-4-1-3-Finish
DD	Start-1-3-1-3-1-Finish	W	Start-1-4-Finish
F	Start-1-4-1-Finish	WW	Start-1-4-1-4-Finish
FF	Start-1-4-1-4-1-Finish	X	Start-1-5-1-3-Finish
H	Start-1-3-1-5-1-Finish	XX	Start-1-5-1-4-Finish
HH	Start-1-4-1-5-1-Finish	Z	Start-1-2-3-Finish
		ZZ	Start-1-2-3-1-3-Finish

Revised 2020

Get the course chart either as a laminated chart or print it from SailPDX

Laminated charts available at North Sails and West Marine customer service desk

Course Board



Pennant

Course

Pennant	Course

A row shows the course a class division will race

- Courses will be displayed on the committee boat by listing the class divisions (Pennant) followed by the course

Starting Order – Initial Race



1	14 - 2 - A - 14
2	14 - 2 - X - 14
3+4	14 - B - X - 14
5	14 - 2 - U - 14

- The Race Committee shall display the initial starting order on the course board
- A **plus sign** between two or more classes, means those classes will start together at the same time

Starting Order – Subsequent Races



1	FF
2	QQ
3+4	F
5	T

View these numbers as Class Division identifiers and NOT as the starting order

- Subsequent races may be different than the starting order for the first race
- Classes may be started in any order
- Courses may change

Courses



- Courses may be designated by letter or by course description listing OCSA marks individually

Examples

AA

C – 2 – B – 2 – C

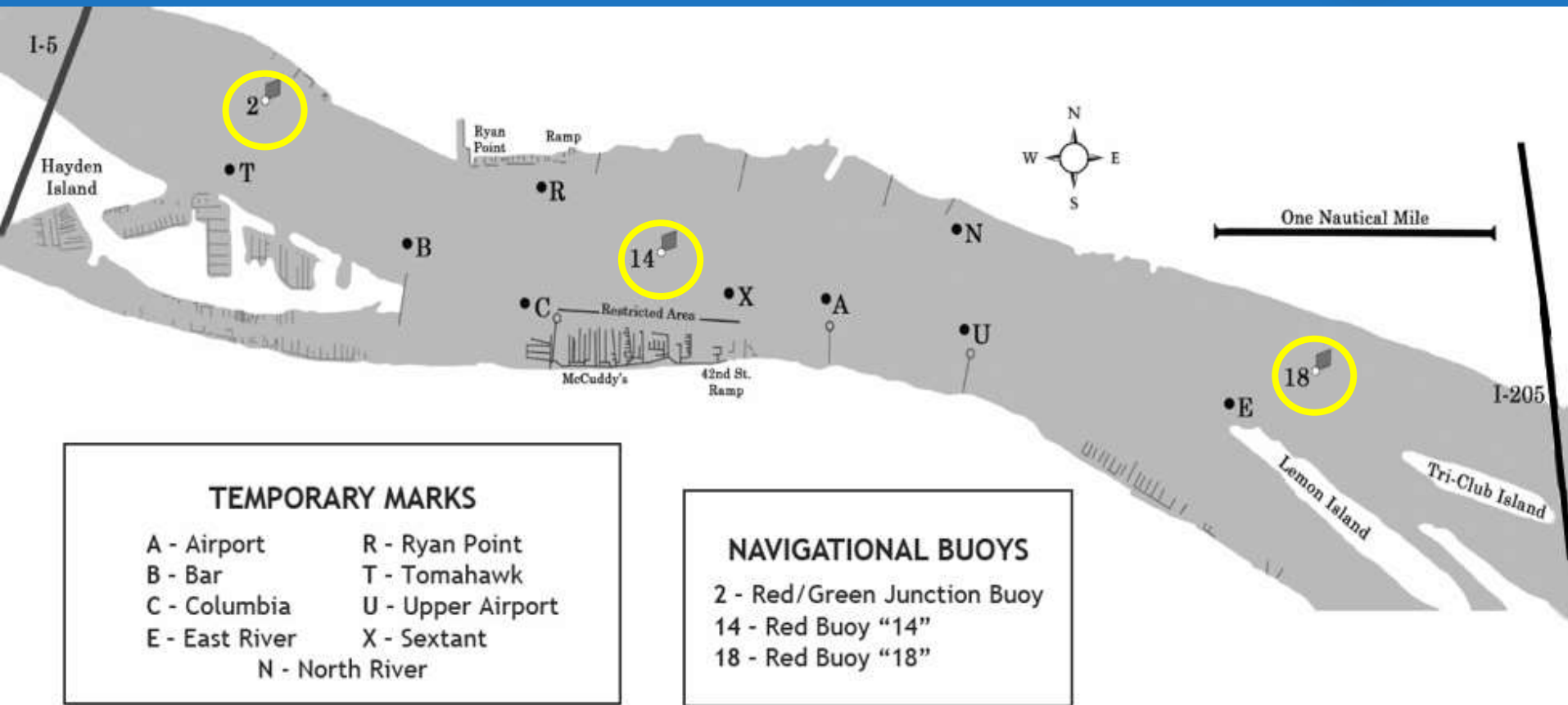
- For course descriptions listing OCSA Designated Marks, the first letter/number is the starting mark, the last is the finishing mark, and those in between are the rounding marks

– Example: 14 – 2 – B – 2 – 14

Start

Finish

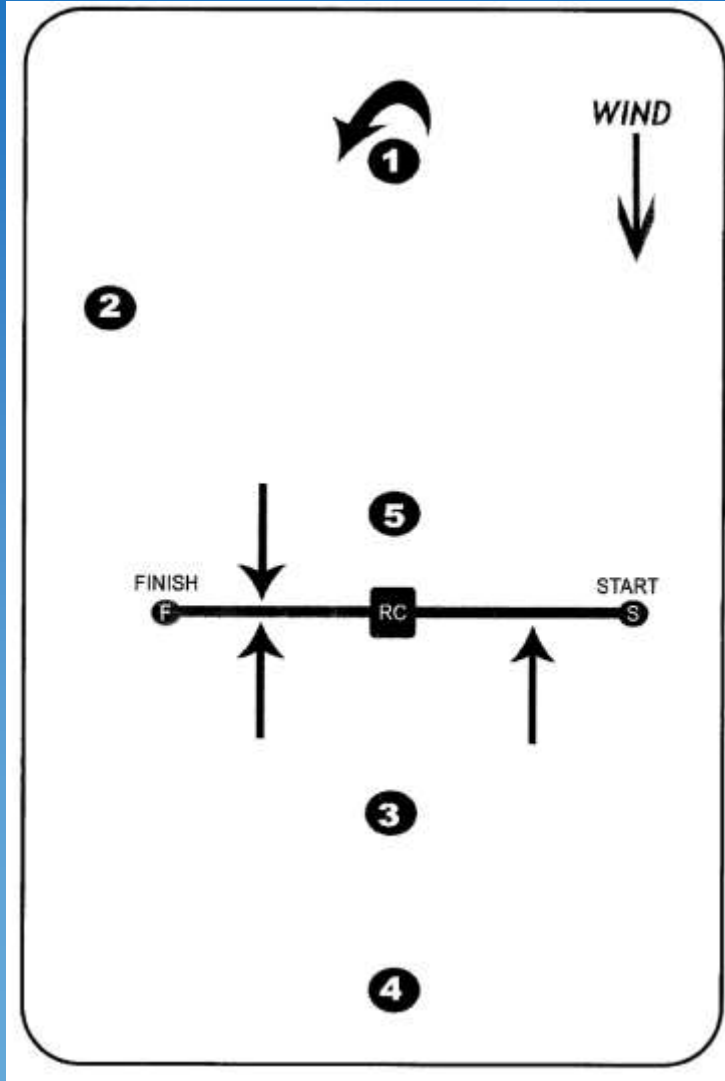
OCSA Designated Mark Chart



The chart describes the marks on the river and approximate location as designated by OCSA. The Race Committee may or may not use all of these marks. Courses will be displayed on the committee boat by listing a Course Description for each class. Each Course Description shall be constructed in accordance with the OCSA General Sailing Instructions in the Racebook.

Do not cross the finish line during the race unless you are: (a) finishing the race, or (b) rounding the mark end of the finishing line when such a rounding is required by the course for your class.

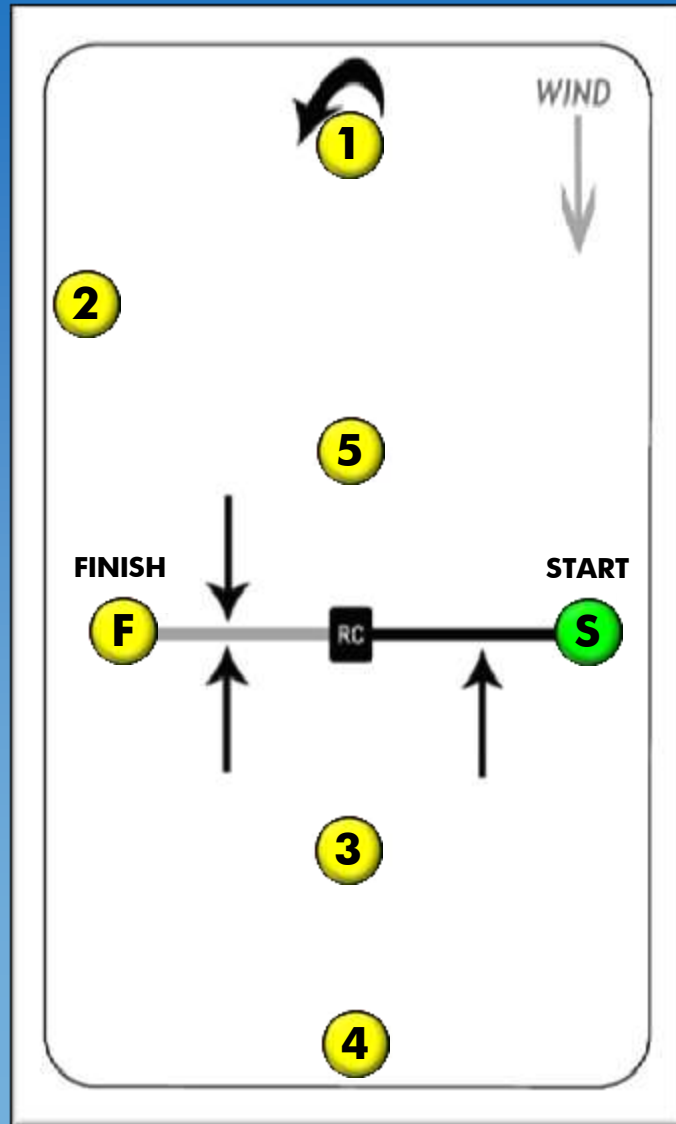
OCSA Windward Leeward Alphabetic Courses



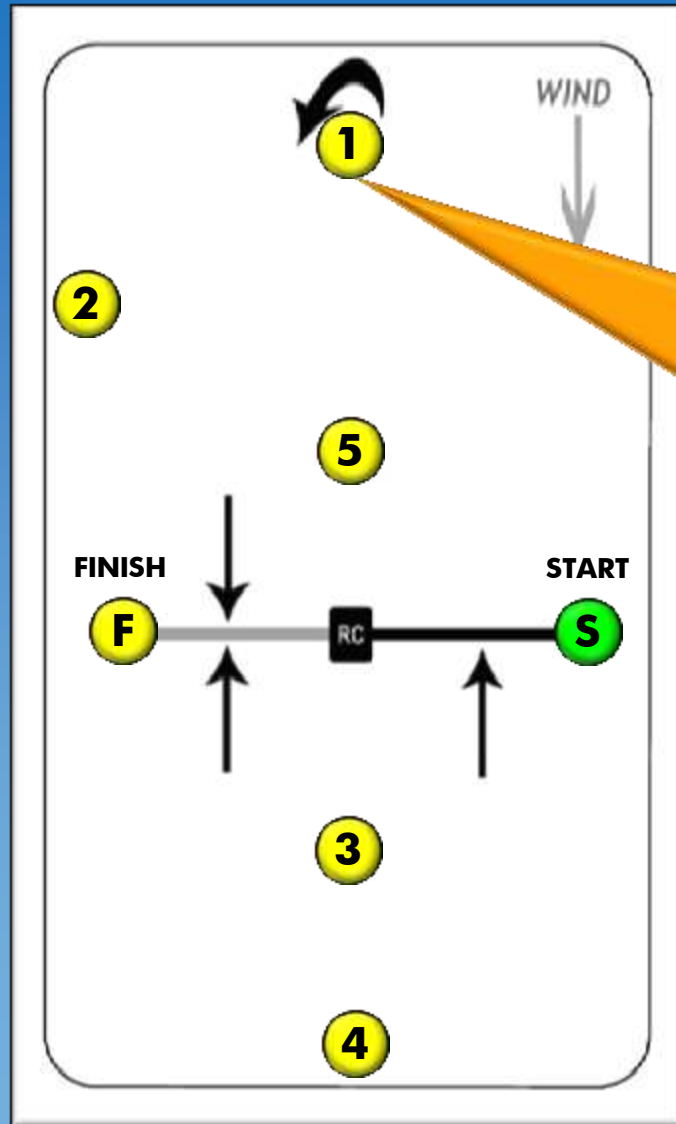
ALPHABETIC TABLE OF COURSES

Leeward (Downwind) Finish Courses		Windward (Upwind) Finish Courses	
A	Start-1-Finish	Q	Start-1-2-5-1-3-Finish
AA	Start-1-2-Finish	QQ	Start-1-2-5-1-4-Finish
B	Start -1-5-1-Finish	S	Start-1-3-1-5-1-3-Finish
BB	Start-1-5-1-5-1-Finish	SS	Start-1-4-1-5-1-4-Finish
C	Start-1-2-5-1-Finish	T	Start-1-3-Finish
CC	Start-1-2-5-1-2-5-1-Finish	TT	Start-1-3-1-3-Finish
D	Start-1-3-1-Finish	V	Start-1-4-1-3-Finish
DD	Start-1-3-1-3-1-Finish	W	Start-1-4-Finish
F	Start-1-4-1-Finish	WW	Start-1-4-1-4-Finish
FF	Start-1-4-1-4-1-Finish	X	Start-1-5-1-3-Finish
H	Start-1-3-1-5-1-Finish	XX	Start-1-5-1-4-Finish
HH	Start-1-4-1-5-1-Finish	Z	Start-1-2-3-Finish
Revised 2020		ZZ	Start-1-2-3-1-3-Finish

Alphabetic Courses



Alphabetic Courses



Can be
Navigation
Buoy "2" if a
RED square is
displayed
above the
Course Board

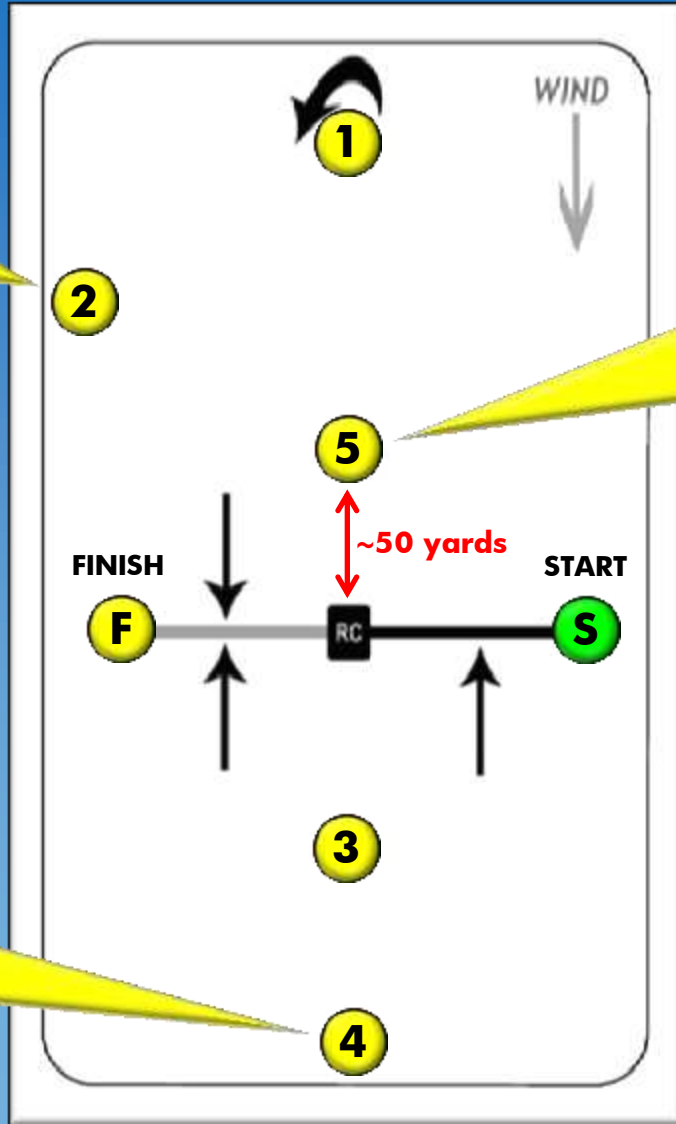
Alphabetic Courses



The RC may or may not set all of these marks

If set, mark "5" should be approximately 50 yards to weather of the RC boat

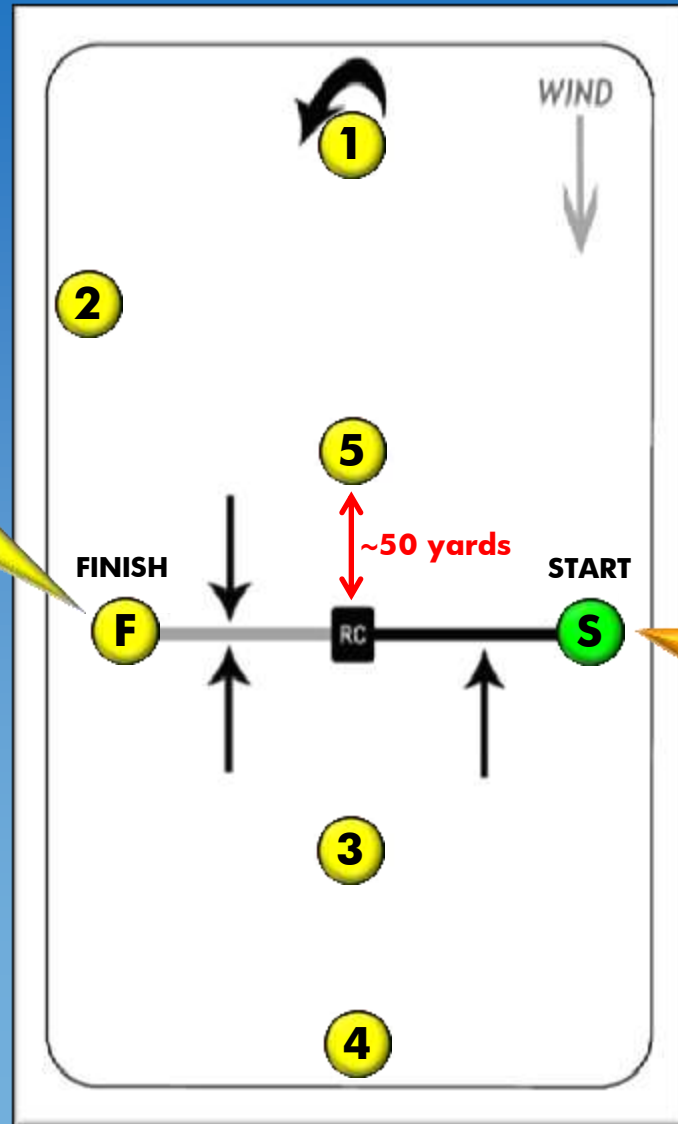
If mark "4" is used, then mark "3" must also be set



Start Line — Alphabetic Courses



The start and finish lines may be on either side of the RC.



The starting mark shall be **GREEN** if the RC is using separate starting and finishing lines

Setting Race Mark #5

50 yards from RC Boat



Start Line



The Race Committee may be stationed on either end of the Start Line

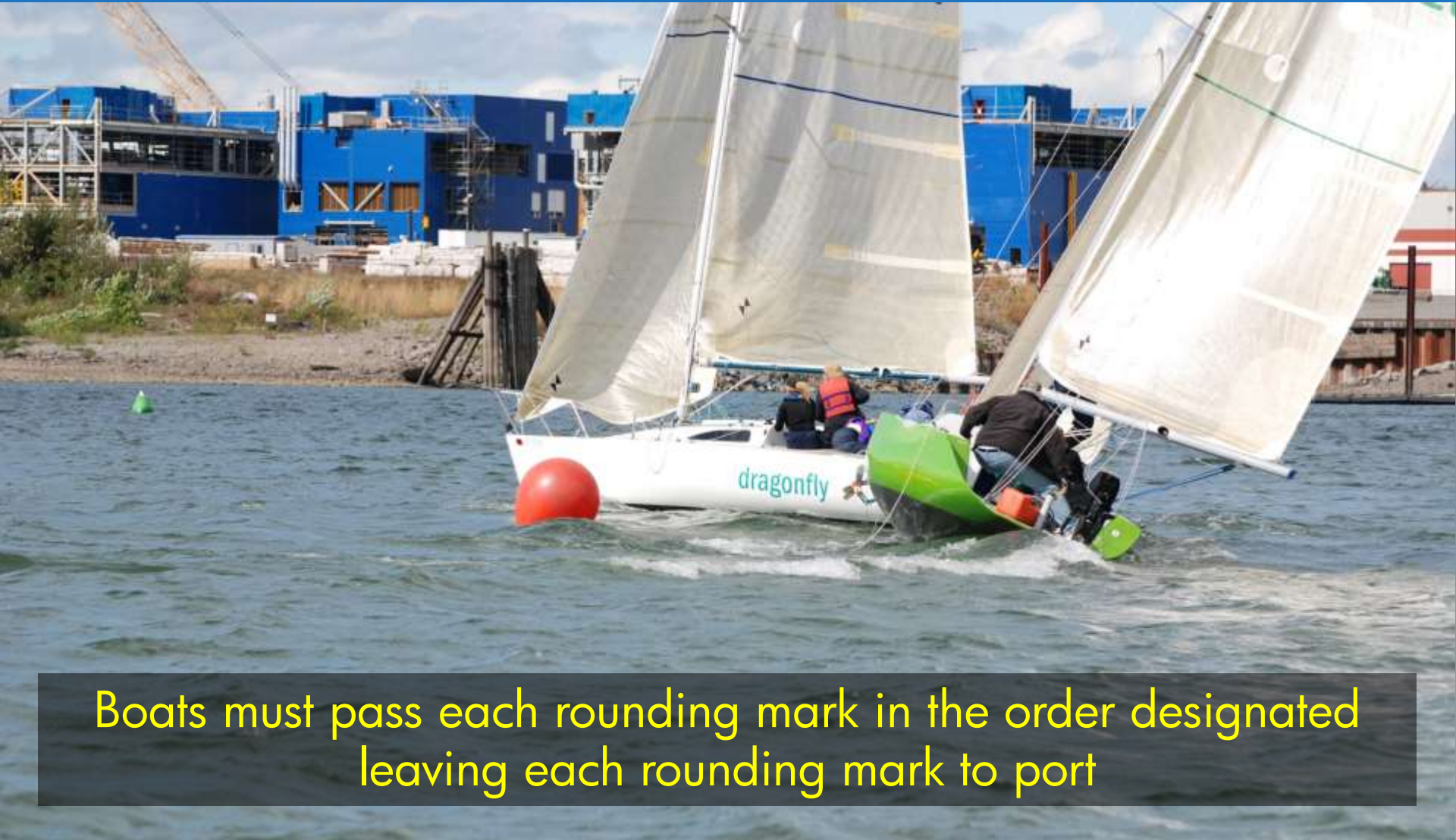
Orange
Flag

RC
Boat

Start
Line



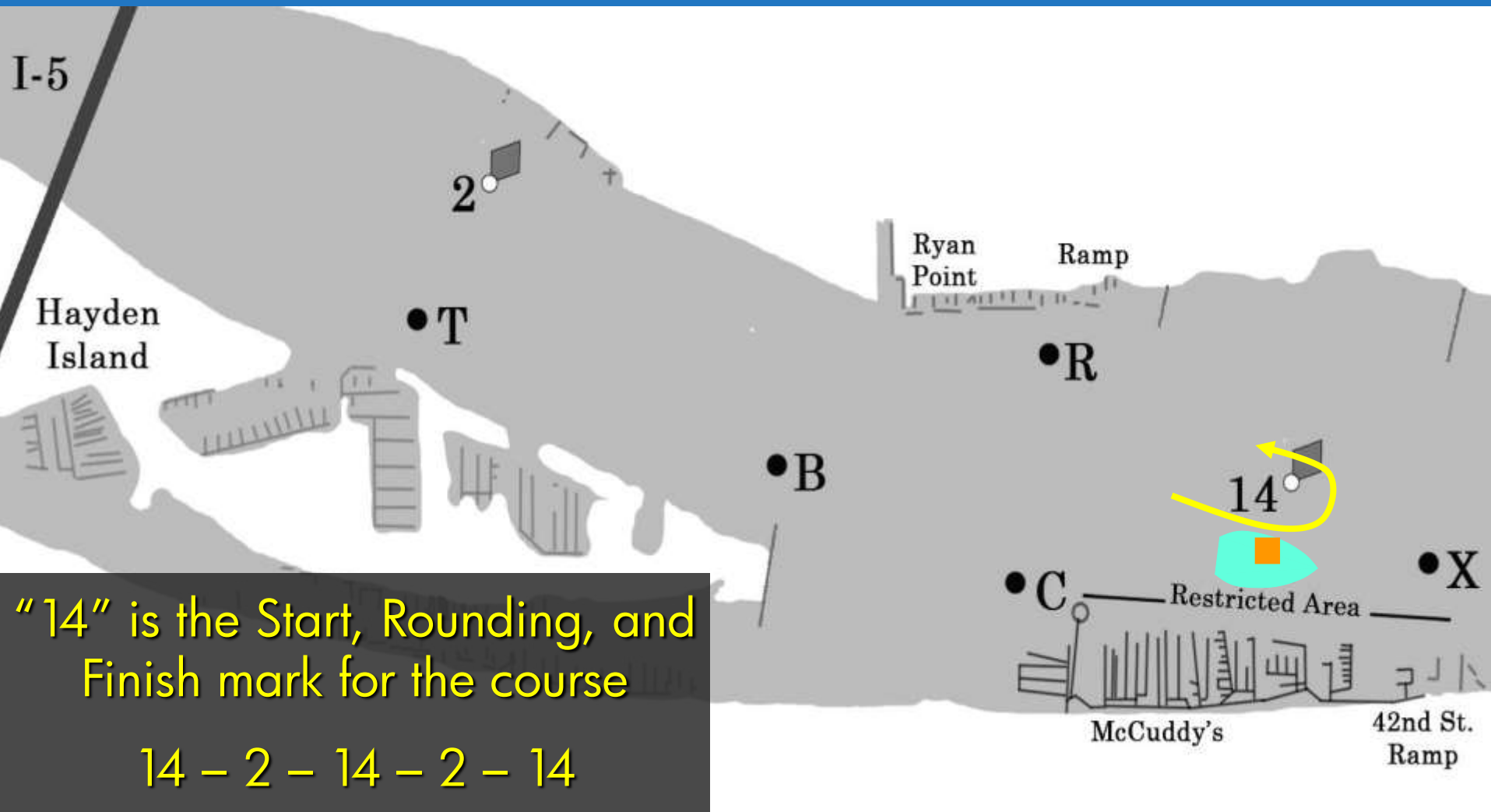
Mark Roundings



Boats must pass each rounding mark in the order designated leaving each rounding mark to port

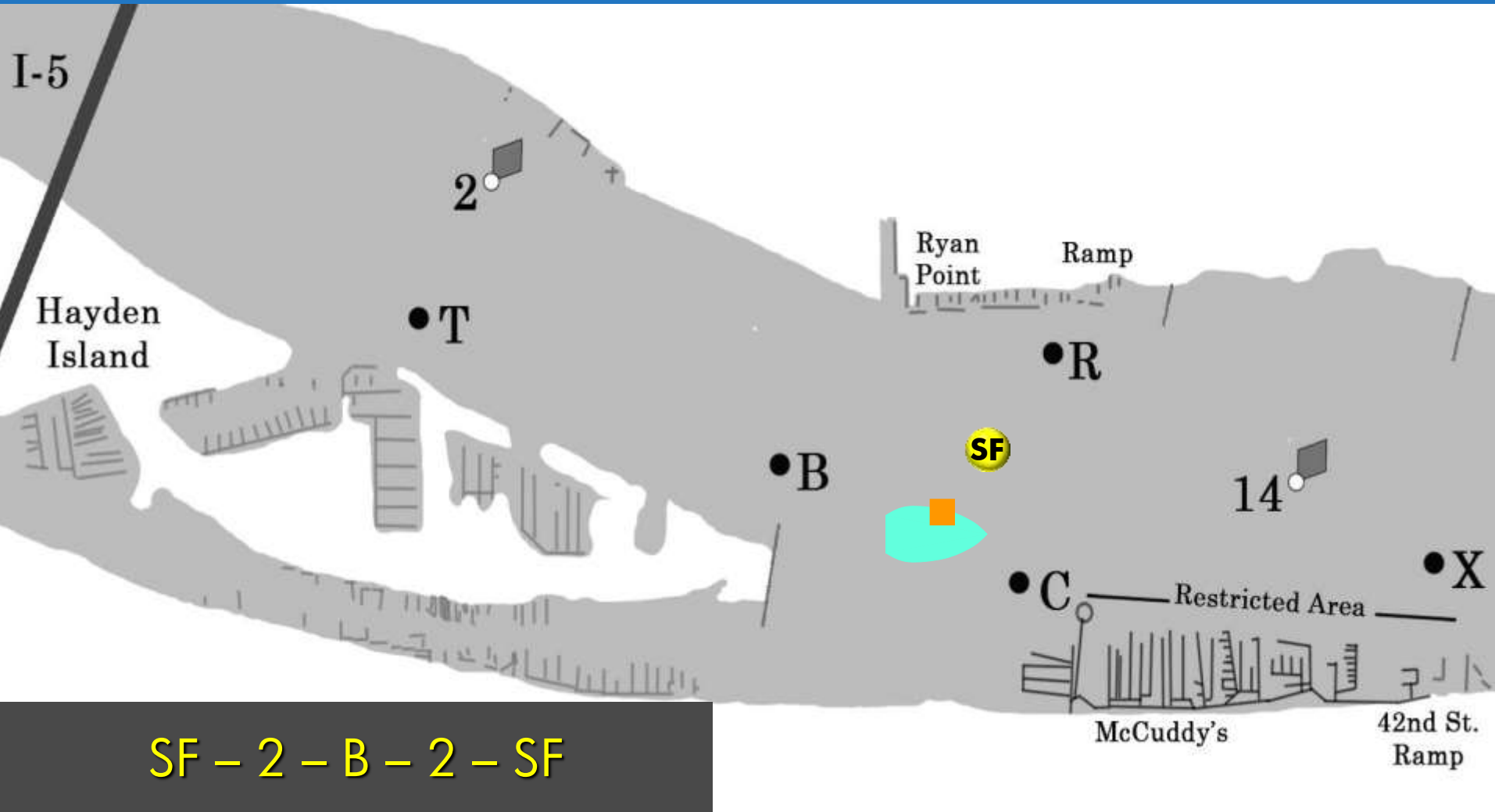
Designated Course

Use the marks, not the RC Boat for roundings



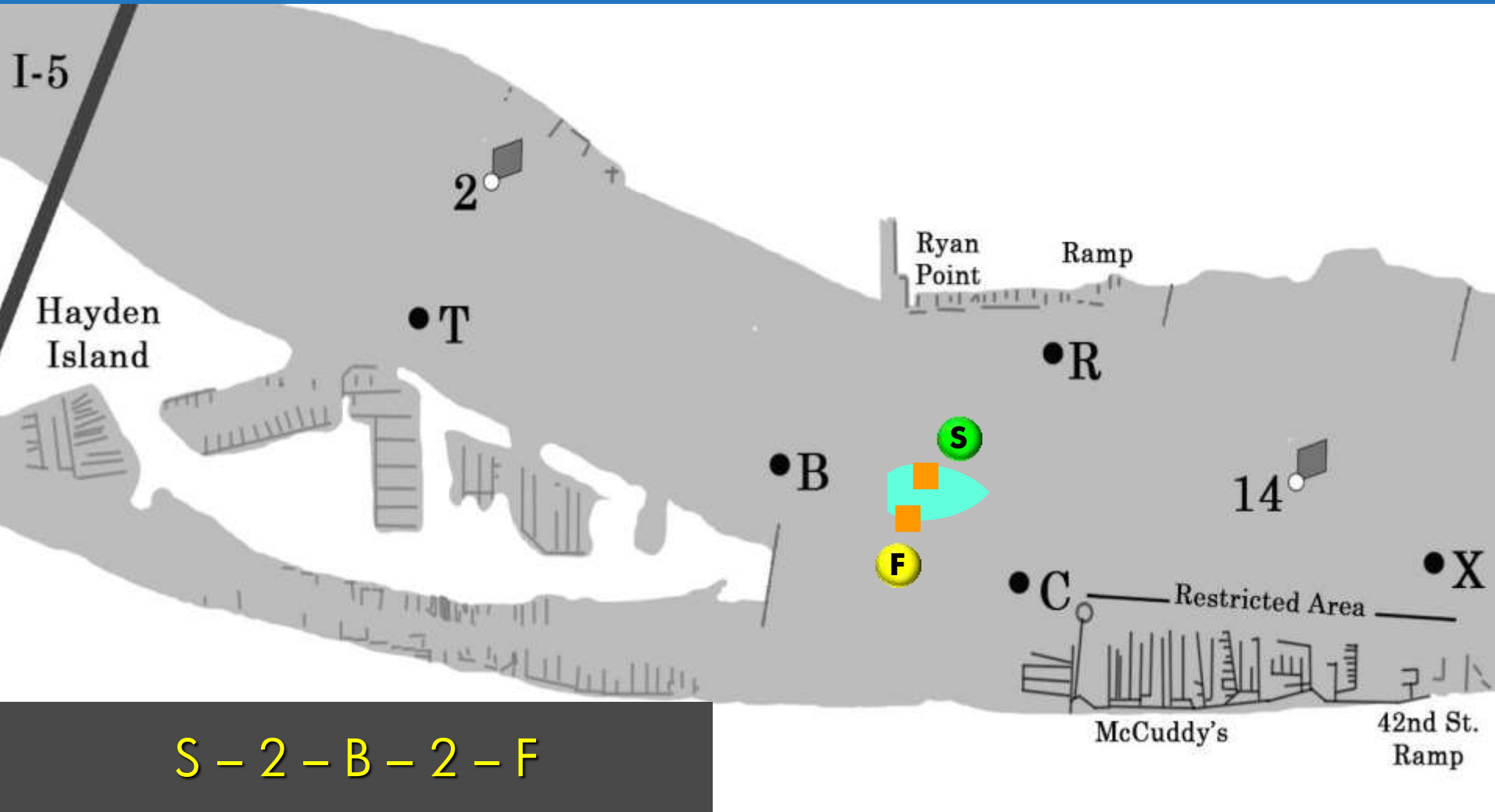
Start and Finish Lines are the same

Finish between mark and orange flag on RC



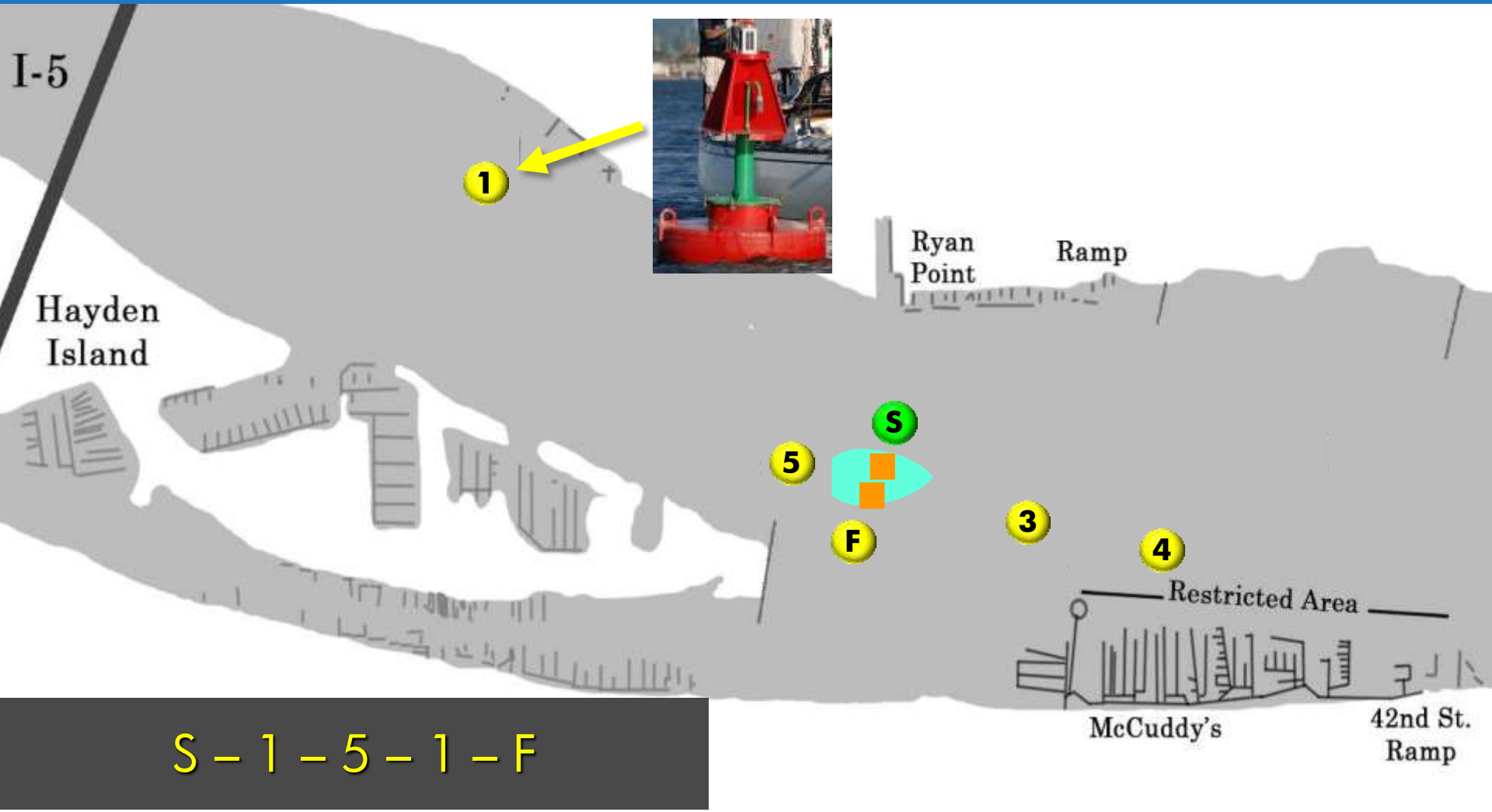
Separate Start and Finish Lines

Starting Mark is **GREEN**



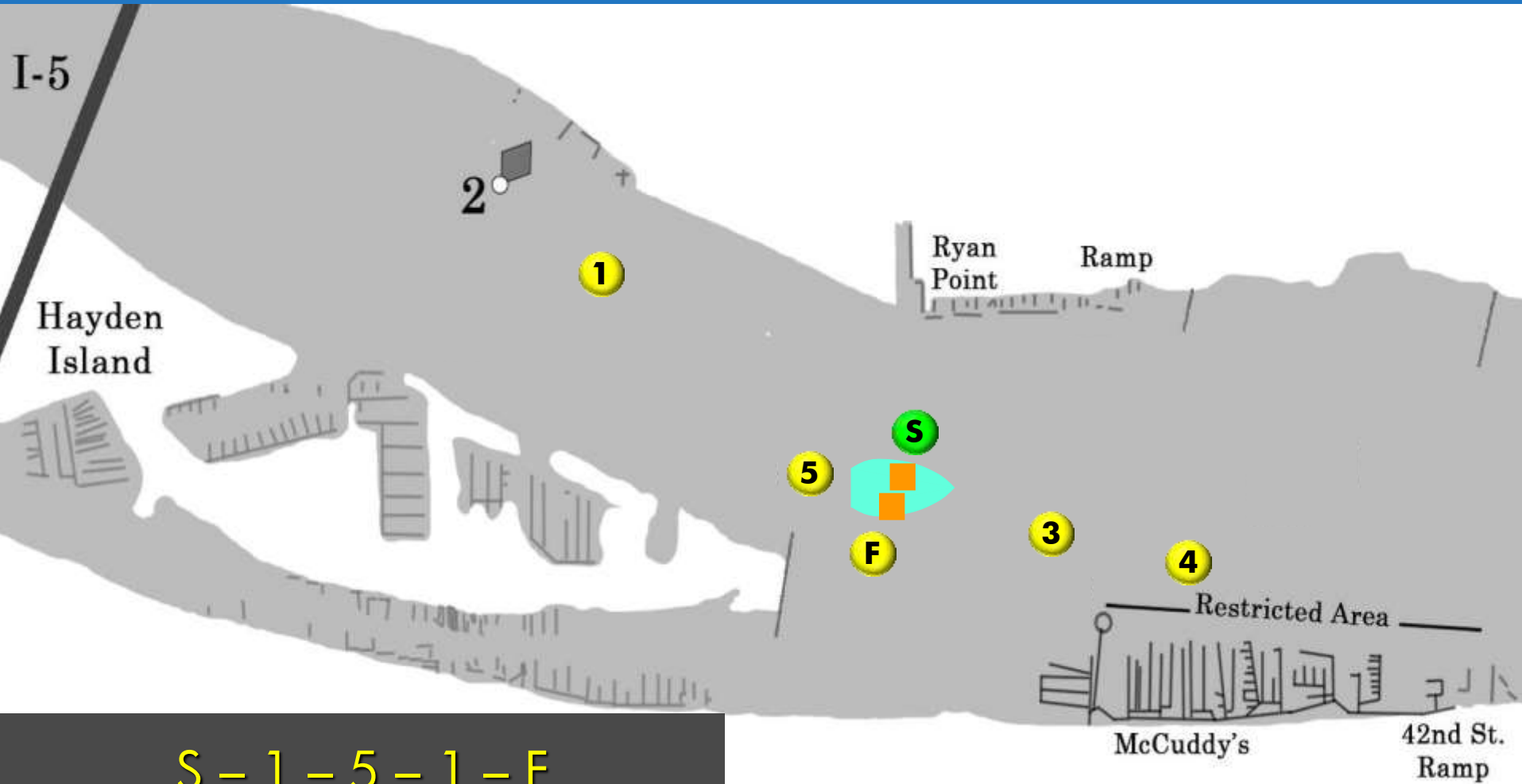
Alphabetic Course B

■ RED square at top of course board



Alphabetic Course B

Mark #1 is NOT OCSA Designated mark 2



The Start



Starting Area



- Don't interfere with a boat that has received its preparatory signal
 - Infractions are subject to disqualification upon protest

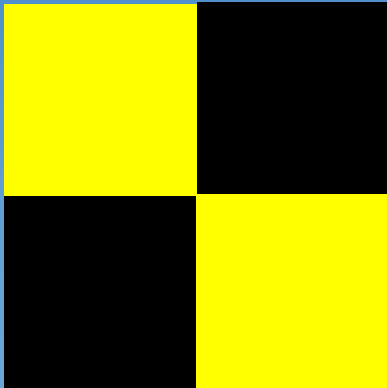
Preparing to Start

Dropping the Come Within Hail



“L”

Come Within Hail


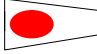


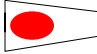






- Lowered with four short blasts
- One minute following the lowering of the “Come Within Hail” flag, a Warning Flag (Class Pennant) will be raised accompanied by one blast
- Sound signals are not required to start a race, so pay attention to the flags

Flag Sequence for a Start

Two Start Example



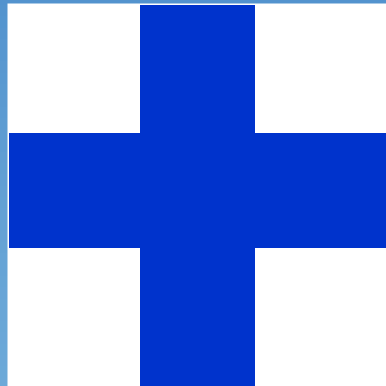
Time	Sound	Signal	Event
T - 6	4 blasts	Come Within Hail	 Down
T - 5	1 blast	Start Identifier	 Up
T - 4	1 blast	Preparatory	 Up
T - 1	1 blast	Preparatory	 Down
T	1 blast	Start Identifier	 Down
T - 5	1 blast	Next Start Identifier	 Up
T - 4	1 blast	Preparatory	 Up
T - 1	1 blast	Preparatory	 Down
T	1 blast	Start Identifier	 Down

Individual Recall



"X"

Individual Recall



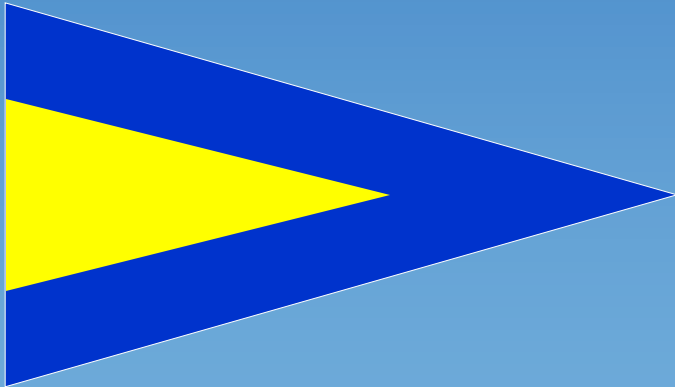
An RC that fails to hail or messes up the hails is NOT grounds for redress

- Raised with one blast when all premature starters are identifiable
- Lowered after all premature starters have returned to the pre-start side of the line or when the Preparatory flag comes down for the next start
- The Race Committee is **NOT** required to hail the sail numbers of recalled boats
- Skippers are responsible to know whether they were over early

General Recall



"1st Substitute"
General Recall



- Raised with two blasts when the RC is not able to identify all premature starters or when traffic conditions would interfere with a fair start
- The recalled class will be restarted at the end of the current sequence *Changes RRS 29.2*

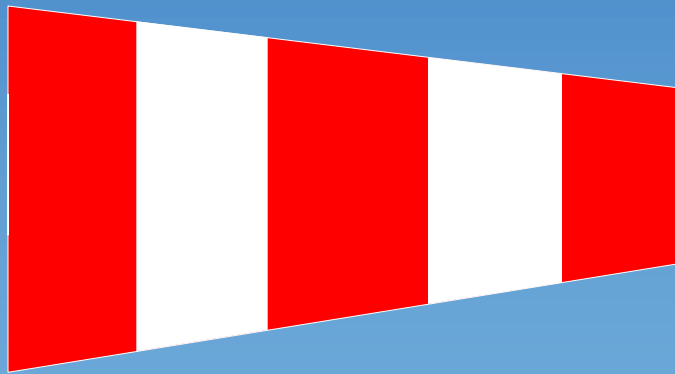
Delayed Starts



Postponement



"AP"
Postponement



- Raised with two blasts
- Reasons for Postponement
 - Lack of wind or major wind shift
 - Commercial Traffic
 - Timing sequence lost
 - Anything that would prevent safe, fair starting conditions

Contact with the Committee Boat



Race Committee
postpones as they deal
with the collision

A boat that makes contact with any Race Committee boat or mark set boat, excluding the anchor line or drogue, SHALL be scored DSQ without a hearing. *This changes RRS 63.1 & Appendix A5*

Anchoring



- Anchoring before and during a race is not uncommon on light wind days
- Avoid anchoring in the channels used by barge traffic

Propulsion – Prior to your Start



Your propulsion needs to be off or out of gear 4 minutes before you cross the starting line



The Finish



Finish Line



Finish between the mark and
the orange flag on the Race
Committee Boat



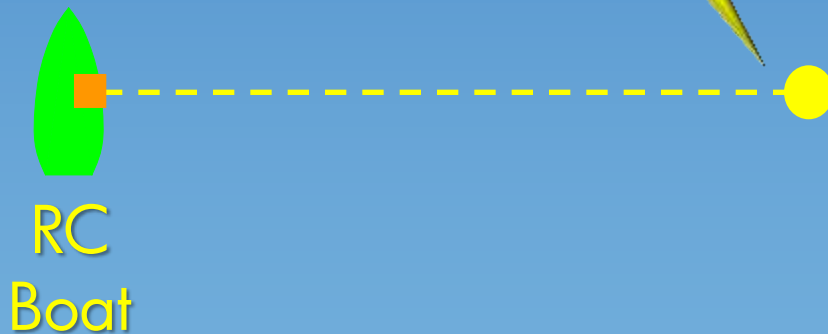
Finish
Line

- The Race Committee Boat may be stationed on either end of the finishing line
- The Race Committee may have a separate starting and finishing line

Finish Line Restriction



DO NOT cross the line between the RC boat and the finishing mark unless: (a) finishing, or (b) rounding the mark end of the finishing line when such a rounding is required by the course for your class



- A boat that fails to observe this restriction may exonerate herself by making a One-Turn penalty.
- A boat that fails to exonerate herself shall be scored DNF without a hearing. *This changes RRS 63.1 & Appendix A5*

Time Limits



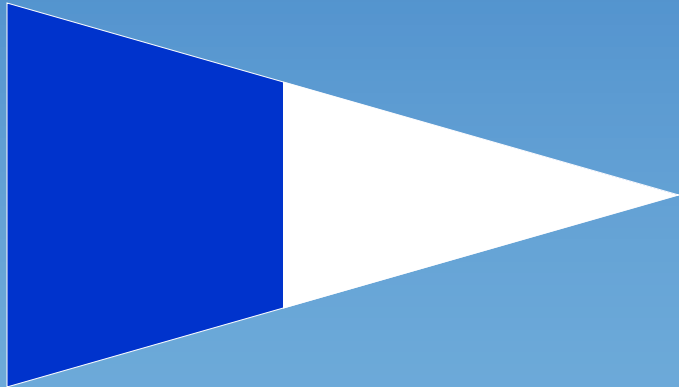
- The first boat in a class must finish within 2 hours of the start
- Any boat not finishing within 30 minutes of the first boat in the class will be scored Time Limit Expired (TLE)

- A boat that is delaying the start of the next race may be awarded her place by the Race Committee without finishing.

Start Another Race



"2nd Substitute"



- If the Race Committee intends to start another race on the same day, it may display the second substitute (with no sound) while boats are finishing

Shorten Course & Abandonment



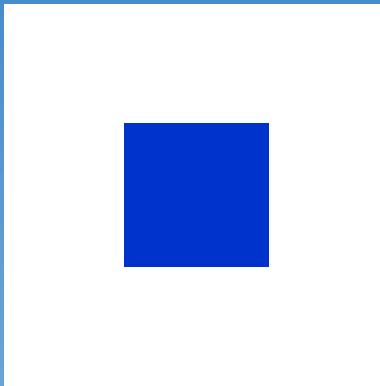
Shorten Course

Common when the wind is dying



"S"

Shorten Course



Finish is between the nearby mark and the pole displaying this flag

- Raised with two blasts
- Applies to all classes when flown by itself
- Applies to specific classes when flown over the class flag for that class

Shortened Course

For a Specific Pennant

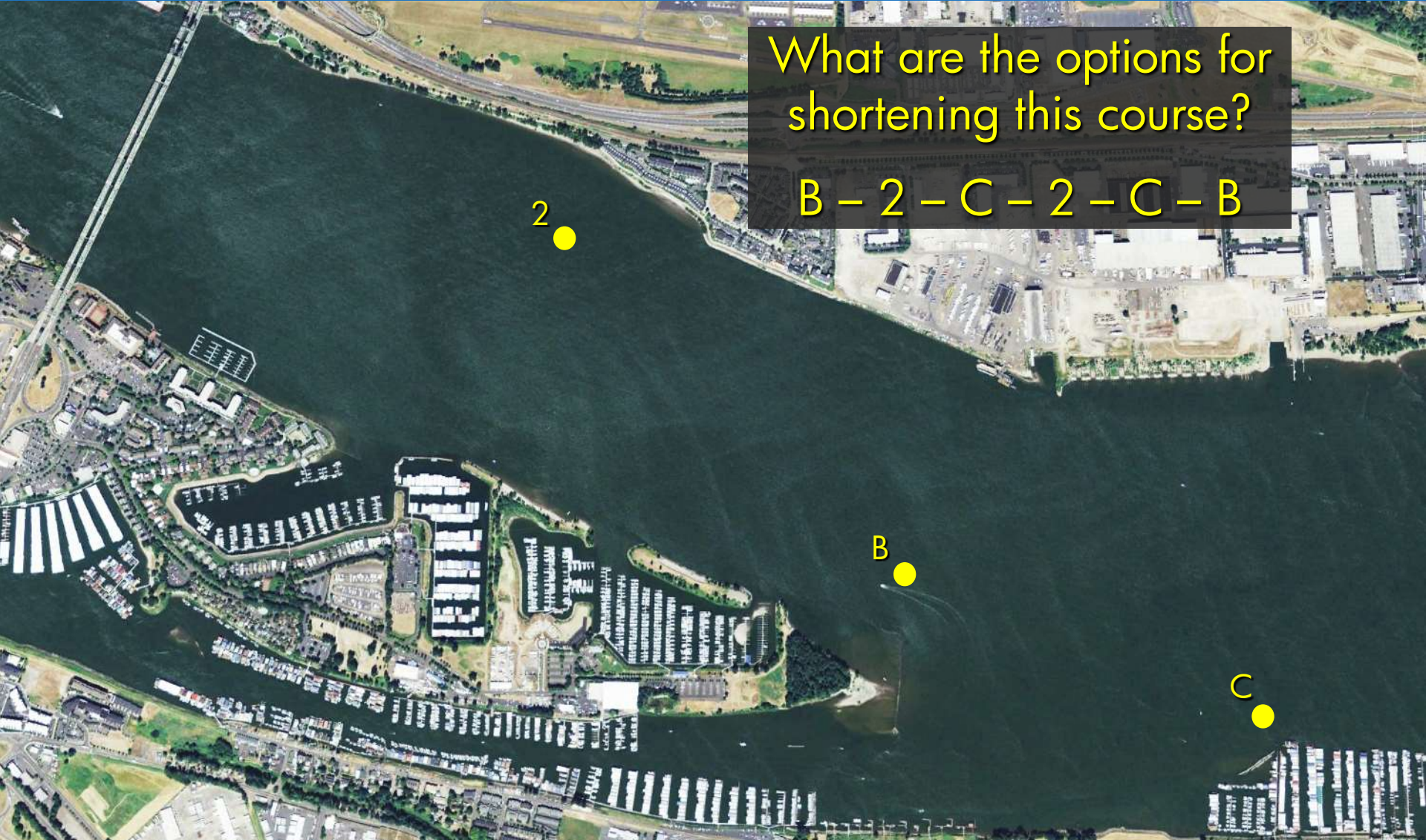


Shortened Course

Example: OCSA Designated Marks



What are the options for shortening this course?
B - 2 - C - 2 - C - B



Shortened Course

Example: OCSA Designated Marks



What are the options for shortening this course?

B - 2 - C - 2 - C - B

Answer:

- First leg at 2
- Second leg at C
- Third leg at 2
- Fourth leg at C

Shortened Course

Example: OCSA Alphabetic Course



What are the options for shortening this course?

S - 1 - 4 - F



Shortened Course

Example: OCSA Alphabetic Course



What are the options for shortening this course?

S - 1 - 4 - F

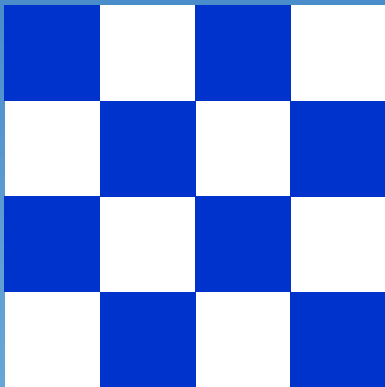
Answer:

- First leg at 1
- Second leg at 4

Abandon the Race



N

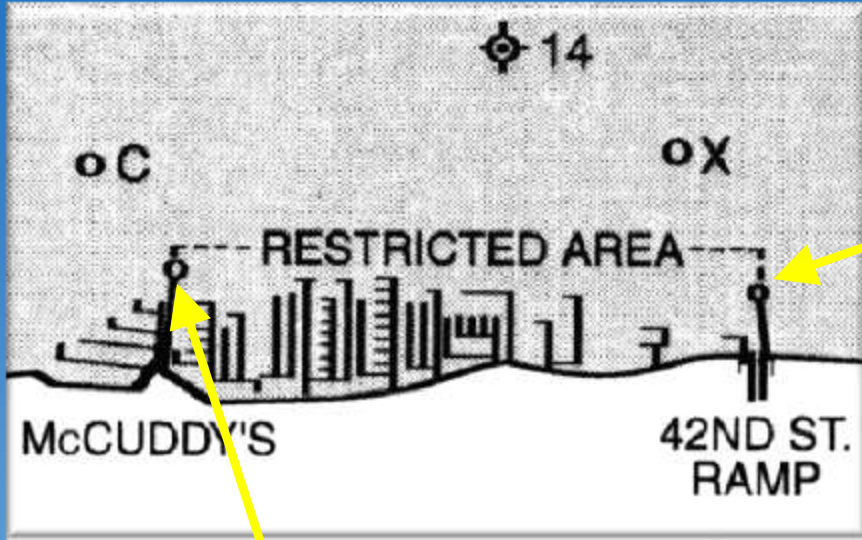


- Raised with three blasts
- The “N” (Abandonment) flag means the race is abandoned
- Applies to all classes when flown alone
- Applies to specific classes when flown over the class flag for that class

Obstructions and Restricted Areas



Restricted Area



Restricted Area



Restricted Area

150 feet

McCuddy's

RCYC

42nd St.
Ramp

- In the absence of county marker buoys, boats shall not sail within 150 feet of the moorages or launch area
- County marker buoys upriver or downriver of the restricted area do not designate an area restricted to racing

Obstructions

Wing Dams and Pilings



All boats shall pass on the channel side of any piling, buoy marking a missing piling, or log raft or barge secured to a piling

A



Wing
Dam

42nd St.
Ramp

Obstructions

Wing Dams and Pilings



Not all wing dams are marked with pilings on the channel end



Know where the wing dams are

Obstructions

Wing Dams and Pilings



Obstructions

Wing Dams and Pilings



Areas that are Obstructions



- Infractions of OCSA General Sailing Instructions 10.1, 10.2, or 10.3 shall be subject to the same protest provisions as an infraction under Part 2 of the RRS
- A boat that may have committed an infraction may exonerate herself by making a **One-Turn penalty** in compliance with RRS Appendix V1

OCSA Safety Regulations



DO NOT interfere with commercial traffic



Five horn blasts from commercial traffic could get you a protest and possible DSQ



Propulsion for Safety

Use of Auxiliary Propulsion



A boat in a position where she may interfere with a stand-on vessel shall clear the danger area immediately, and may use propulsion if necessary to do so, provided she does not improve her competitive position. – *This changes RRS 42*

OCSA Safety Equipment Regulations

Standard USCG Requirements Plus



- Lifejackets must provide at least 33.7 lbs. of buoyancy (no belt packs)
- VHF radio, waterproof
- Soft plugs stowed or attached to all thru-hull fittings
- Bucket, 2 gallons with lanyard
- Commercial Anchor
- First Aid Kit and Manual
- Heaving line on deck w/50' floating line





Thank You